

Crime-lite[®]
PRO

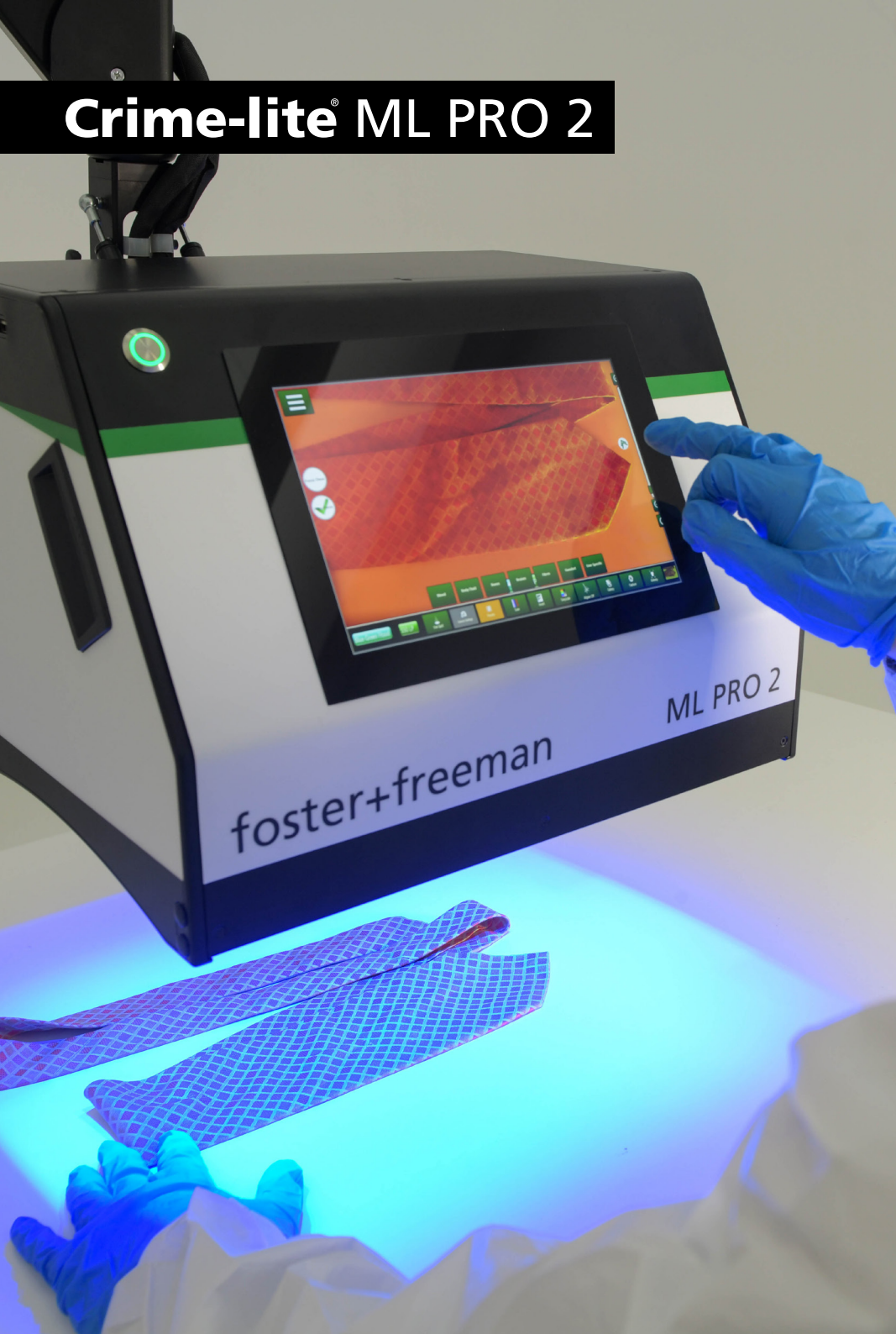


Crime-lite[®] ML PRO 2

Streamlined Multispectral
Imaging of Forensic Evidence

foster+freeman

Crime-lite® ML PRO 2



Rapid Forensic Screening and Imaging to Meet the Demands of Busy Laboratories

A simple and intuitive solution, the Crime-lite ML PRO 2 is a semi-automated evidence screening tool built to meet the demands of busy forensic laboratories tasked with processing a broad variety of evidence types.

Detect Traces of Evidence

Fundamentally designed for the detection of biological evidence, the ML PRO 2 is a dependable workhorse for examination of all common forensic traces including:



DNA +
Body Fluids



Hairs +
Fibres



Fingerprints
+ Impressions



Drugs +
Narcotics



Gun Shot
Residues



Tool
Marks

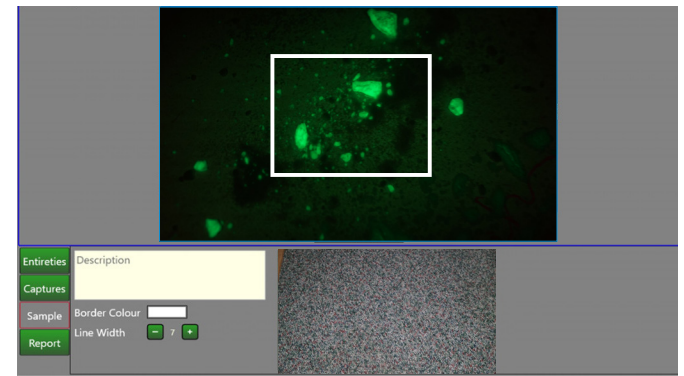
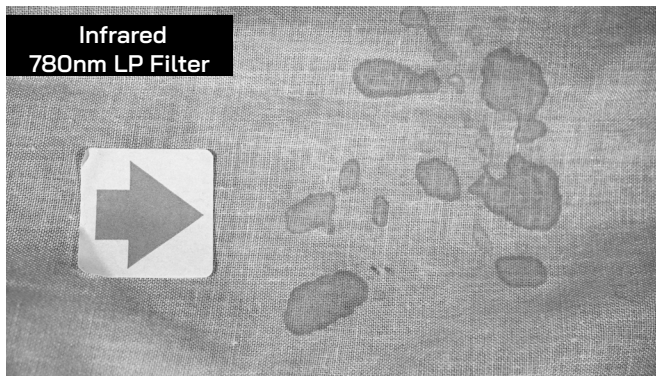
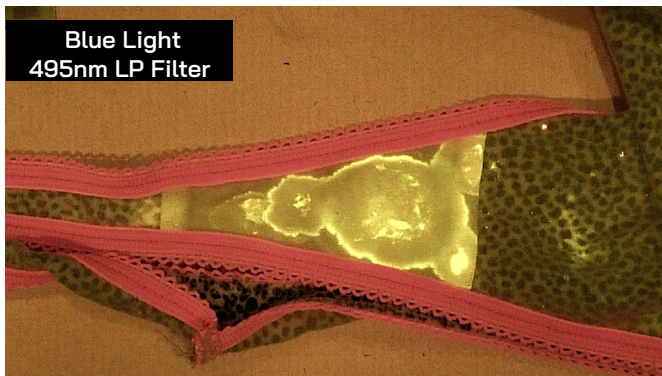
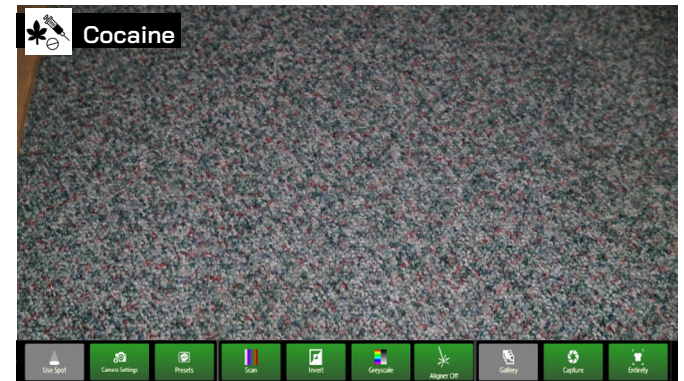
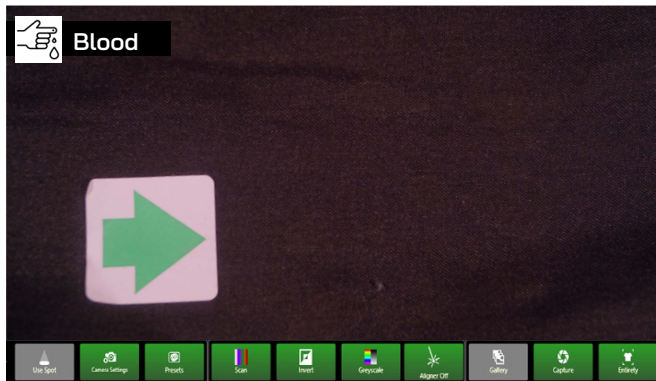
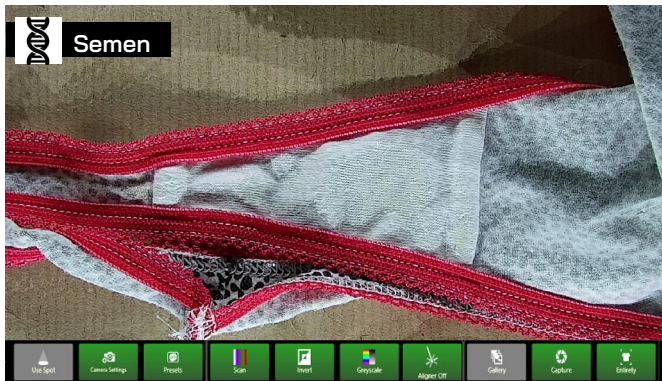
Capture High Resolution Images

Engineered around a high resolution full-spectrum camera with intelligent optics, the ML PRO 2 imaging system has been fine tuned for the photography of evidence. Raise the system to capture entirety images; zoom in to detect and capture fine detail.



A Seamless User Experience

Updated for 2024, the improved ML PRO 2 workflow enables rapid detection, capture and mark-up of evidence allowing users to quickly generate and output comprehensive case reports.



Search and Detect

Examine objects under UV, Visible, and IR light sources to reveal hidden details, utilising pre-configured lighting/filter combinations for specific evidence types, or craft custom configurations for ultimate flexibility.

The ML PRO 2 maneuvers effortlessly over evidence, enabling both one-click automated searches and manual control over light sources and filters.

Capture and Enhance

Capture high-quality images with the scientific-grade 4MP Vis/IR camera optimised for forensic analysis.

Intelligent optics maximise the visibility of even faint traces of fluorescing evidence, whilst powerful zoom and essential image enhancements like exposure control and invert reveal hidden details, ensuring no evidence escapes detection.

Annotate and Report

Identify areas of interest, mark-up and annotate images using the Crime-lite ML PRO 2 reporting tool.

Optimise the entire evidence workflow by quickly and easily producing court-ready reports, complete with chain-of-custody information, contextual images, side-by-side comparisons, and the option to include software-generated line drawings.



Streamlined Evidence Capture

- Pre-set lighting/filter combinations
- Create custom configurations
- Large field of vision



Scientific-Grade Camera

- 4MP Vis/IR camera
- Optimised for forensic analysis
- 30x optical zoom



Integral Reporting Tool

- Quickly create court-ready reports
- Add case notes and annotations
- Export to common formats

Crime-lite® ML PRO 2



Fully-Integrated Technology for a Complete Imaging Solution



Detect More Evidence with Multispectral UV/Vis/IR Illumination

Exploit the full forensic spectrum to detect evidence

Vis UV 365 UV 385 V B BG G O IR

High-intensity LED illumination at all wavelengths



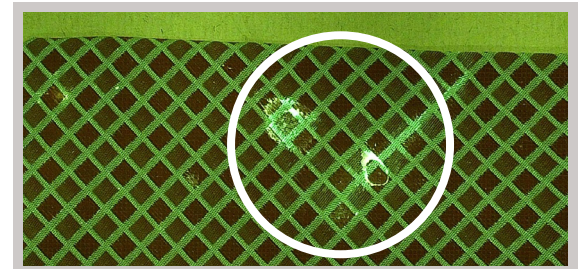
Ensure High-Quality Results with Motorised Camera Filters

- Automatic or Manual selection of camera filters
- Select from over 3,300 waveband/filter combinations
- Simplify searches using pre-set examinations
- Improve results with evidence-specific bandpass filters

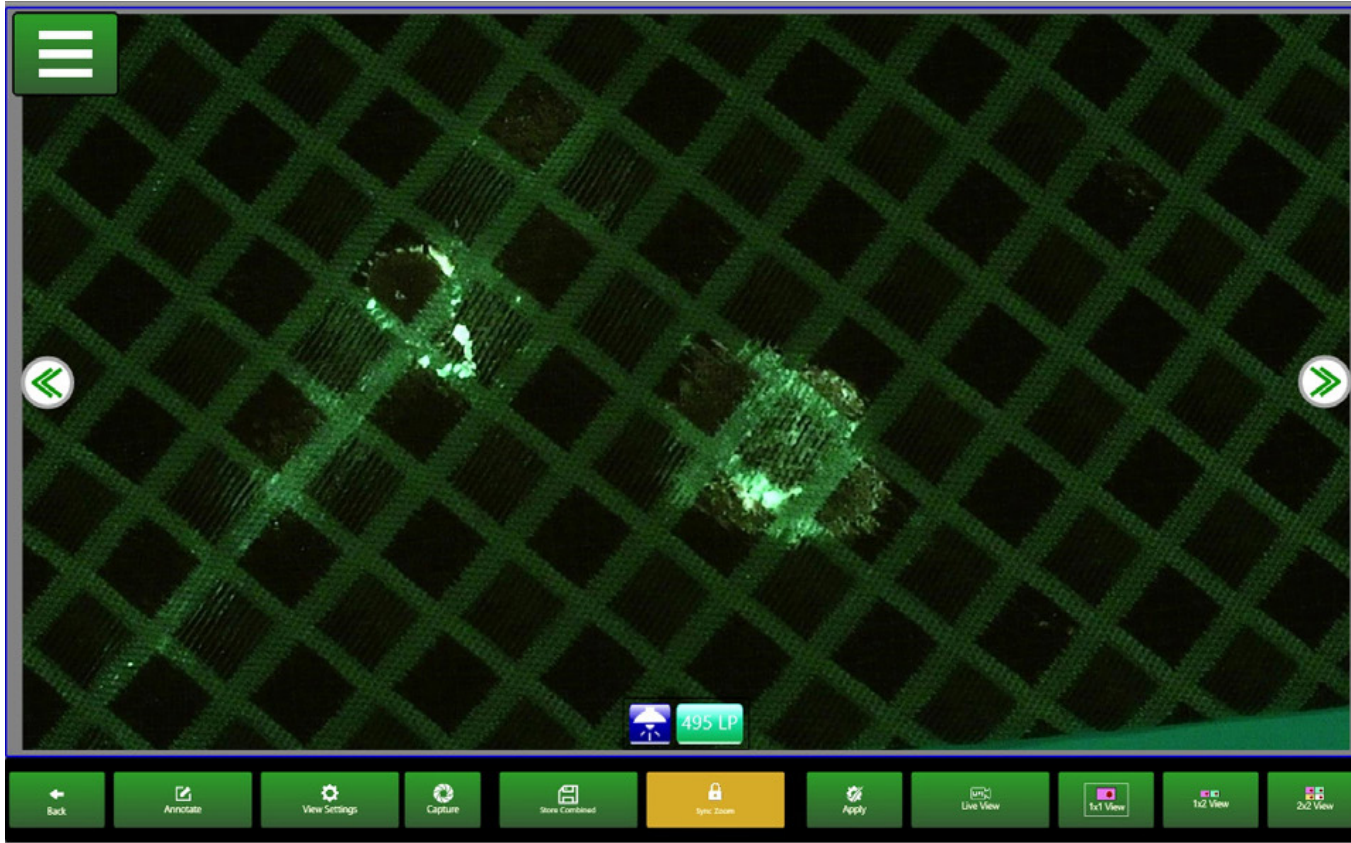


Capture Every Detail with Full-Resolution Image Capture

- Precise scientific-grade 4MP camera system
- 30x optical magnification
- Accurate close-up and wide area photography
- Focus-Assist range finder/alignment LED



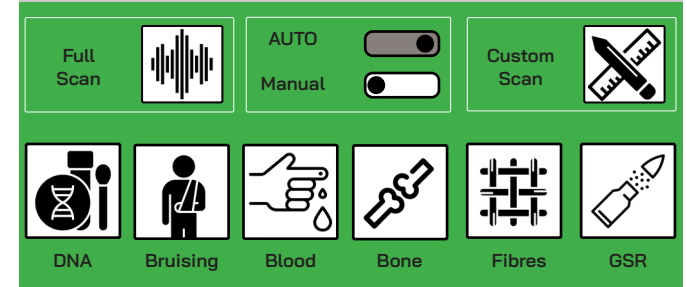
Detect even the faintest traces of evidence



- ✓ **Serology**
- ✓ **Trace Evidence**
- ✓ **Post Mortem**

Improve the efficiency of examinations using pre-set examinations based on common evidence types.

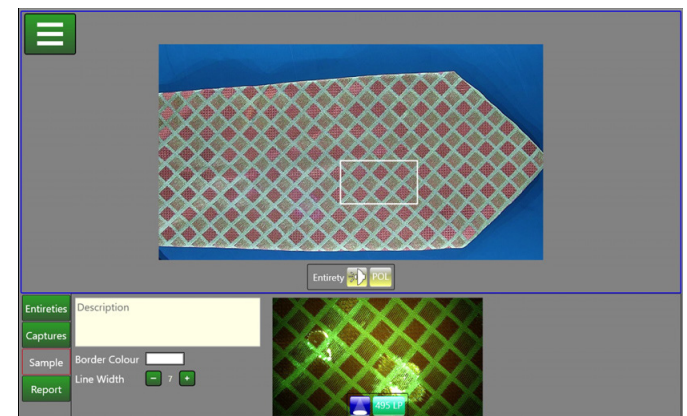
Need something more specific? The ML PRO 2 allows users to configure their own custom lighting/filter combinations, ideal for routine tasks or examinations.



Intuitive Software Interface for a Seamless Evidence Workflow

The Crime-Lite ML PRO 2 boasts a redesigned interface specifically crafted for forensic examiners in ISO 17025 / 17020 compliant labs. Operated via the 10.1" touchscreen interface, the simple yet powerful software provides effortless access to a robust suite of evidence detection, image capture, and report building functions - designed to optimise efficiency and meet stringent quality standards.

For examiners seeking to improve speed and efficiency, the 'ribbon-style' interface offers a logical step-by-step process complete with predefined pre-set examinations. For those that prefer to take full manual control of examinations, the software includes an 'advanced' mode that provides full access to all camera and illumination settings. Switch back and forth between software modes at the touch of a button.



Intuitive software operated via touchscreen interface

Crime-lite® ML PRO 2

Revolutionise your Laboratory Workflow by Upgrading to Crime-lite ML PRO 2

While Crime-Lite ML technology remains a trusted forensic workhorse in laboratories worldwide, the fully-digital Crime-Lite ML PRO 2 unlocks new levels of capability and efficiency:

Uncover the Invisible:

Detect and examine traces of evidence outside the range of human vision

Maximise Evidence Detection:

Explore over 3300 illumination/filter combinations to visualise a broader spectrum of evidence types.

Capture Every Detail:

Document examinations with a scientific-grade camera, ensuring no crucial evidence escapes capture.

Streamline Your Workflow:

From initial screening to comprehensive reports, the ML PRO 2 handles every stage of the evidence examination workflow, saving you time and effort.



*Crimelite ML PRO in use at the Nederlands Forensisch Instituut
Image: Josje Deekens*

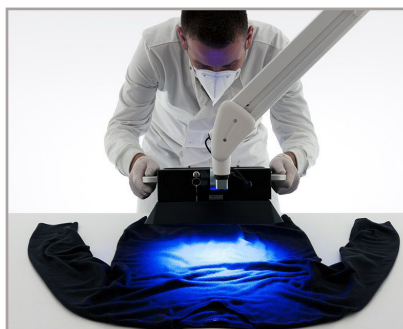


Crime-lite ML



Year of Release
Imaging
Illumination
Viewing Filters
Magnification

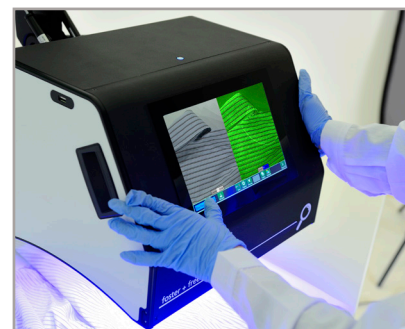
2006
N/A
2 wavelengths as standard
Slot-In Filter Set
1.8x Biocular Lens



Crime-lite ML2



2011
Bolt-On Vis/IR Camera
8 wavelength options
Slot-In Filter Set
1.8x Biocular Lens



Crime-lite MLPRO



2020
2MP VIS/IR Camera
15 Illumination UV/Vis/IR modes
12x Motorised Filters
Up to 30x Optical



Crime-lite MLPRO 2



2024
4MP VIS/IR Camera
15 Illumination UV/Vis/IR modes
14x Motorised Filters
Up to 30x Optical

Crime-lite ML PRO 2 System Selection

Specify a system that meets your requirements



Crime-lite ML PRO 2 System Only

No mounting options selected

ORDER Code: QCL/MLPRO2/SYSTEM



Crime-lite ML PRO 2 Trolley System

*Mounted on lab trolley
supplied with 32" monitor*

ORDER Code: QCL/MLPRO2/SYSTEM-TROLLEY



Crime-lite ML PRO 2 Wall Mount System

*Mounted on 1.6M Articulated Arm
supplied with 32" monitor*

ORDER Code: QCL/MLPRO2/SYSTEM-ARM



Crime-lite ML PRO 2 Bench Mount System

Mounted on lab bench arm

ORDER Code: QCL/MLPRO2/SYSTEM-DEMO

Optional Accessories

32" Monitor

ORDER Code: QCL/MLPRO/MON32

Wireless Keyboard & Mouse

ORDER Code: QCL/MLPRO/KM

Crime-lite ML PRO 2 System Specification

For full instrument specifications, please contact sales@fosterfreeman.com

Camera/Optics	<ul style="list-style-type: none"> - 4MP Full-spectrum camera - Spectral range: 350nm to 1050nm - 30x optical zoom 	
Display	<ul style="list-style-type: none"> - Integrated 10.1" multi-touch LCD - Screen Resolution 1280 x 800 - Compatible with nitrile/latex gloves 	
Illumination	<ul style="list-style-type: none"> - Multispectral flood illumination > 365, 405, 445, 475, 525, 640nm 	LED
	<ul style="list-style-type: none"> - Multispectral spot illumination > 365, 405, 445, 475, 525, 640 nm 	LED
	<ul style="list-style-type: none"> - Side/oblique illumination > VIS, UV 385nm, IR 850nm 	LED
Motorised Filters	<ul style="list-style-type: none"> - Visible and IR longpass and bandpass filters with thresholds at: <ul style="list-style-type: none"> » Bandpass / 360nm, 415nm, 530nm, 550nm » Longpass / 420nm, 455nm, 495nm, 550nm, 590nm, 645nm, 715nm, and 780 nm 	
	<ul style="list-style-type: none"> - Linear Polariser 	
	<ul style="list-style-type: none"> - Broadband visible pass filter (400-700 nm) 	
Standard Examination Accessories	<ul style="list-style-type: none"> - UV Goggles - Light baffle - Magnetic polarising filters - USB blanking plugs - Dust Covers 	
Software Features	<ul style="list-style-type: none"> - 'App' style user interface - Pre-set examinations for common evidence types - One-click Full AutoScan - Image review and comparison function - Editable image annotation facilities - On screen digital scale and measurements - Report creation (PDF/RTF) - Available in multiple languages 	
Safety and Compliance	<ul style="list-style-type: none"> - CE and RoHS compliant - EN61010-1 compliant - EN62471 compliant 	

Crime-lite® **ML PRO 2**

Ready to find out more?



fosterfreeman.com/crime-lite-ml-pro

foster+freeman UK
info@fosterfreeman.com
+44 (0)1386 768 050

foster+freeman USA
usoffice@fosterfreeman.com
888 445 5048

foster+freeman EU
de.sales@fosterfreeman.com
+49 (0)210 255 76 525

foster+freeman NL
nl.sales@fosterfreeman.com
+31 (0)6 1114 3858

foster+freeman