

**One Crime-lite  
Two LED colours  
Three wavebands**



**NEW Crime-lite 42S UV/IR**  
with UV-Vis-IR camera & tablet PC

# Crime-lite® 42S

***The first high intensity dual-colour forensic Crime-lite® for crime scene and laboratory applications***

- Unique 16 LED dual-colour alternate light sources
- Switch between wavebands at the touch of a button
- Dual waveband anti-glare camera filters and goggles

The Crime-lite® 42S provides three different illumination wavebands in a single high specification light source.

Two arrays of 8 LEDs of differing wavebands can be used alternately or in combination for the fluorescence examination of evidence including, blood, fibres, accelerants, gun shot residues, and chemically treated fingerprints.

foster + freeman

# Crime-lite® 42 S

## SWITCHABLE DUAL-COLOUR RANGE OF FORENSIC LIGHT SOURCES

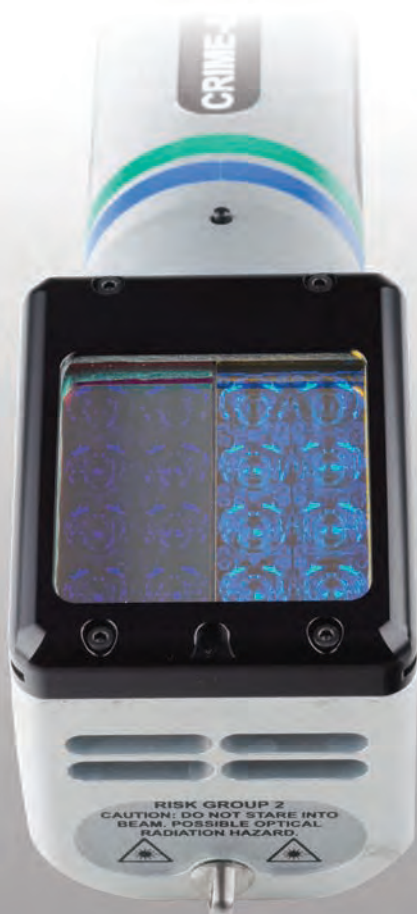
The Crime-lite®42S, switchable between two arrays of 8 high intensity LEDs, provides the forensic examiner with three illumination outputs in a single alternate light source.

Using a simple 3-way control the examiner is able to alternate between two narrowband wavelengths or to use all 16 LEDs to provide high intensity wideband illumination.

The ability to detect evidence is enhanced by using differing wavebands and allows forensic examiners to reduce search times.

Crime-lite 42S light sources are available in the following combinations:

<b>White 400-700nm</b>	<b>&amp;</b>	<b>Blue 420-470nm</b>
<b>UV 350-380nm</b>	<b>&amp;</b>	<b>Violet 395-425nm</b>
<b>Blue 420-470nm</b>	<b>&amp;</b>	<b>Blue/Green 445-510nm</b>
<b>Blue 420-470nm</b>	<b>&amp;</b>	<b>Green 480-560nm</b>
<b>Blue 420-470nm</b>	<b>&amp;</b>	<b>Red 600-660nm</b>
<b>Green 480-560nm</b>	<b>&amp;</b>	<b>Orange 570-610nm</b>
<b>Yellow 540-590nm</b>	<b>&amp;</b>	<b>Red 600-660nm</b>
<b>Infrared 800-900nm</b>	<b>&amp;</b>	<b>UV 350-380nm NEW</b>



### PRODUCT FEATURES

- 16 high intensity LEDs, 8 of each chosen wavelength
- Constant light output throughout battery charge
- High capacity rapid charge lithium ion battery
- Robust high-specification construction

### EXAMINATION FEATURES

- Easily switch between wavelengths
- 10%, 30%, 50% or 100% dimming levels
- Shadow-free beam
- Supplied with twin-filter viewing goggles

<b>LEDs</b>	16 x high efficiency LEDs (8 of each selected wavelength)
<b>Runtime</b>	Continuous with AC adaptor or up to 750 minutes with battery.
<b>Battery charge time</b>	22minutes
<b>Weight</b>	560g

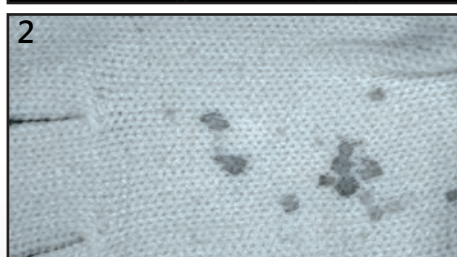
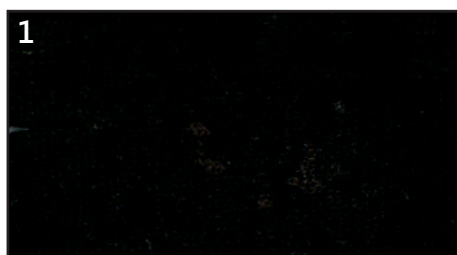


# Crime-lite 42S Applications



## Fingerprints on plastic bag

1. Plastic bag is treated with PolyCyano UV.
2. Under UV illumination fingerprints become clearly visible with excellent contrast and ridge detail.



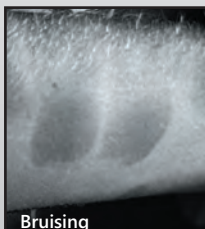
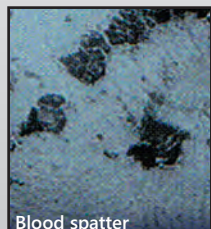
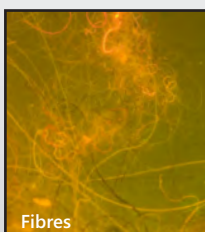
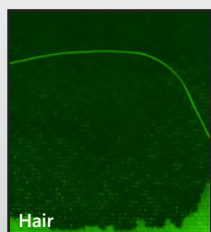
## Blood on dark fabric

1. Blood on black woolen glove
2. The colour of the glove 'drops out' under IR leaving the blood stain highly visible

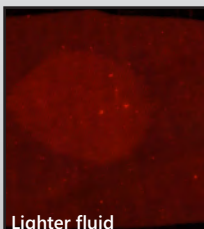
## CRIME-LITE COLOUR

	WHITE	UV	VIOLET	BLUE	BLUE/GREEN	GREEN	YELLOW	ORANGE	RED	INFRARED
Blood stains	✓			✓	✓	✓	✓	✓	✓	✓
Blood spatter	✓			✓	✓	✓	✓	✓	✓	✓
Body bruising & bite marks	✓	✓	✓	✓	✓	✓	✓	✓	✓	✓
Body fluids		✓	✓	✓	✓	✓	✓	✓	✓	✓
Bone & tooth fragments				✓	✓	✓	✓	✓	✓	✓
Hair				✓	✓	✓	✓	✓	✓	✓
Fibres	✓	✓	✓	✓	✓	✓	✓	✓	✓	✓
Gunshot residues				✓	✓	✓	✓	✓	✓	✓
Some drug residues		✓	✓	✓	✓	✓	✓	✓	✓	✓
Accelerants				✓	✓	✓	✓	✓	✓	✓
Redwop				✓	✓	✓	✓	✓	✓	✓
Nanoparticles		✓	✓	✓	✓	✓	✓	✓	✓	✓
DFO				✓	✓	✓	✓	✓	✓	✓
Greenwop				✓	✓	✓	✓	✓	✓	✓
Rhodamine 6G				✓	✓	✓	✓	✓	✓	✓
Basic yellow				✓	✓	✓	✓	✓	✓	✓
Acid yellow				✓	✓	✓	✓	✓	✓	✓
Ardrox		✓		✓	✓	✓	✓	✓	✓	✓
Magnetic red powder				✓	✓	✓	✓	✓	✓	✓
Ninhydrin	✓			✓	✓	✓	✓	✓	✓	✓
fpNatural 1 IR Powder				✓	✓	✓	✓	✓	✓	✓
General mixed debris	✓	✓	✓	✓	✓	✓	✓	✓	✓	✓
General contrast search	✓			✓	✓	✓	✓	✓	✓	✓
Shoeprints & dust marks	✓			✓	✓	✓	✓	✓	✓	✓

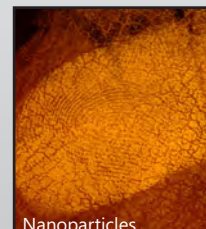
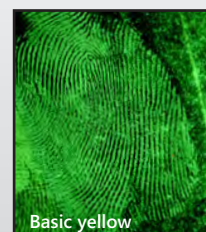
## Trace evidence



## Accelerants



## Fingerprints



# Crime-lite® 42S cased kits

Foster + Freeman Crime-lites® are available individually or as cased kits.

Below are a selection of standard kits that meet the requirements of the majority of Crime-lite® users, if you would like to specify your own custom kit please contact our sales office or your local Foster + Freeman agent.



	<b>Crime-lite® light sources included in kit</b>							
	<b>WHITE BLUE</b>	<b>UV VIOLET</b>	<b>BLUE BLUEGREEN</b>	<b>BLUE GREEN</b>	<b>GREEN ORANGE</b>	<b>YELLOW RED</b>	<b>IR UV</b>	<b>82L</b>
<b>CRIME-LITE® 42S BASIC SEARCH KIT</b> QCL/42S/2KIT	✓	✓						
<b>CRIME-LITE® 42S THREE LIGHT KIT</b> QCL/42S/3KIT	✓	✓	✓					
<b>CRIME-LITE® 42S FOUR LIGHT KIT</b> QCL/42S/4KIT	✓	✓	✓		✓			
<b>CRIME-LITE® 42S FIVE LIGHT KIT</b> QCL/42S/5KIT	✓	✓	✓		✓	✓		
<b>CRIME-LITE® 42S/82L KIT</b> QCL/42SL/5KIT	✓	✓	✓		✓			✓
<b>CRIME-LITE® 42S BEYOND VISIBLE KIT</b> QCL/42UVIR/K							✓	

## Crime-lite 42S UV/IR Beyond Visible Kit

The new Crime-lite UV/IR Beyond Visible crime scene search kit provides investigators with a powerful search tool for the detection of blood, fingerprints, body fluids and other forensic evidence that can only be seen beyond the visible spectrum.

- Kit Includes**
- Crime-lite 42S Ultraviolet/Infrared light source
  - 5MP auto-focus camera module
  - Ruggedized tablet PC and holding frame
  - Waterproof carry case with essential accessories



## Crime-lite Kit Accesories

Included as standard in every cased kit

### VIEWING GOGGLES & CAMERA LENS FILTERS

- Anti-glare viewing goggles.
- Dark adaptation goggles.
- Anti-glare 62mm camera filters and filter pouch.
- UV safety glasses (where required).

### CRIME-LITE® POWER KIT

- 2 x rechargeable batteries.
- fast battery charger.
- battery adaptor.
- battery pouch with shoulder strap.
- AC adaptor.

### SCENE OF CRIME CASE

- SOC case to accomodate all light sources in kit.
- Crime-lite Eye darkness adaptation checker.
- Two detachable belt clips and lanyards.

# Crime-lite<sup>®</sup> Camera Filters & Goggles

When examining evidence using high intensity illumination, light reflected from background surfaces cause standard viewing filters to fluoresce, reducing the visibility of fluorescent evidence.

Manufactured using Schott glass with an additional long-pass coating, Foster + Freeman anti-glare filters eliminate the problem of filter fluorescence and are essential for the examination of fluorescent evidence.



## DUAL-FILTER ANTI-GLARE VIEWING GOGGLES (INCLUDED IN CRIME-LITE 42S CASSED SETS)

Each pair of goggles includes two filters allowing the user to quickly and easily switch between illumination wavebands.

For use with Crime-lite 42S:	UV & Violet		Blue & Green		Blue & Blue/Green		Green & Orange	
Filter	UV	Pale Yellow	Yellow	Bright Red	Yellow	Orange	Red	Bright Red
Wavelength	420nm	455nm	495nm	590nm	495nm	550nm	645nm	590nm
1% transmission	408nm	435nm	476nm	571nm	476nm	529nm	624nm	571nm
Product Code	QCL/42/04		QCL/42/01		QCL/42/02		QCL/42/03	

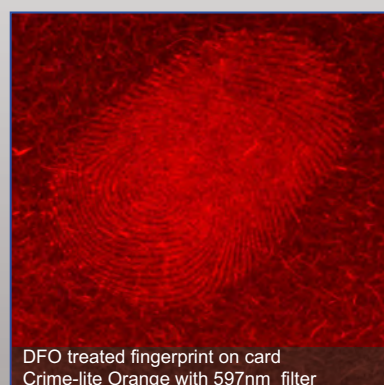
## CAMERA FILTERS (INCLUDED IN CRIME-LITE 42S CASSED SETS)

Camera lens filters are supplied in single wavebands, thread size 62mm (other sizes available upon request)

For use with Crime-lite 42S:	Violet	Blue	Blue/Green	Green	Orange	UV
Filter	Pale Yellow	Yellow	Orange	Bright Red	Red	UV
Wavelength	455nm	495nm	550nm	590nm	645nm	420nm
1% transmission	435nm	476nm	529nm	571nm	624nm	408nm
Product Code	QCL/152	QCL/153	QCL/154	QCL/156	QCL/82S/017	QCL/157

## NARROW BAND TRIMMING FILTERS

Narrow band trimming filters clip-on to the Crime-lite<sup>®</sup> 42S further reducing the output bandwidth reducing interference from background or substrate fluorescence.



Filter	Wavelength	Product Code
Violet	410nm	QCL/82S/018
Blue	448nm	QCL/82S/019
Blue/Green	475nm	QCL/82S/020
Green	522nm	QCL/82S/021
Orange	597nm	QCL/82S/022



# Crime-lite® Accessories

## CRIME-LITE® VIEWING BOX

For use with the Crime-lite® 42S and 82S, the Crime-lite® Viewing Box provides complete ambient light shielding for visual and photographic examination of evidence.

Crime-lite® Viewing Box	QCL/215	1
Basic camera stand	QCL/216	2
Lens bellows	QCL/217	3
Lens bellows adaptor	QCL/218	4



## CRIME-LITE® BEYOND VISIBLE SEARCH KIT

For use with the Crime-lite® 42S UV/IR and the 82S IR, the Crime-lite® Beyond Visible Search Kit provides a complete portable solution for searching the crime scene and the examination of evidence using infrared illumination.

Crime-lite® UV-Vis-IR Camera	QCL/82S/CAM	1
Ruggedized tablet PC	QCL/253	2
Holding Frame	QCL/252	3
UV/IR Pass Camera Filter	QCL/254	not shown



## POWER SUPPLY COMPONENTS & CARRY CASES

† Items supplied in Crime-lite 42S Kit



Rechargeable battery  
(Requires adaptor)  
QCL/82S/008B †



Battery charger  
22 minutes charge time  
QCL/82S/009 †



Vehicle battery charger  
60 minutes charge time  
QCL/82S/010



Battery adaptor  
for rechargeable battery  
QCL/82S/011 †



AC adaptor  
90-240V input  
QCL/80 †



Battery pouch  
with nylon strap  
QCL/82S/012 †



SOC case  
Large QCL/82S/014  
Small QCL/82S/013



SOC trolley & strap  
Carries SOC cases  
QCL/206



Telescopic pole  
Extendable to 880mm  
QCL/85



Wrist lanyard  
Prevents dropping  
QCL/82S/023 †



Crime-lite Eye Dark  
Adaptation Checker  
QCL/264 †



Dark Adaptation  
Goggles  
QCL/266 †